



The California Chapter of the
Association of Family and Conciliation Courts
Invites You to Attend



AFCC-CA Annual Conference

February 8-10, 2008

Co-Sponsored by Los Angeles County Superior Court

The Rosetta Stone of Child Custody:
The Bar, the Bench, and Mental Health Experts Decoding
Each Other's Philosophy and Practice

The Sheraton Delfina
Santa Monica, CA
\$189 single/double

AFCC is an interdisciplinary and international association of judges, lawyers, mediators, mental health professionals, academics, parent educators and others dedicated to improving the lives of children and families through the resolution of family conflict.

The Rosetta Stone of Child Custody:

The Bar, the Bench, and Mental Health Experts Decoding Each Other's Philosophy and Practice

AFCC California Chapter

Although AFCC is a truly international organization, it began in California in 1963. Its original purpose was to provide continuing, specialized education for judicial officers, attorneys, and mental health professionals working with family court issues. Now there are over 3,200 members of AFCC in approximately 24 countries, and its headquarters are located in Madison, Wisconsin. Indeed, most AFCC activity takes place at national and international levels. California, with 397 members, is one of nine U.S. states with a local chapter. The California Chapter has served an important role in the state's training of family-law judicial officers, mediators, evaluators, counselors, and attorneys in the past.

AFCC-California's interdisciplinary educational programs, linked to cutting-edge academic and clinical research related to family issues, have served as a model in national and international venues. In the last decade, the state has increased training programs for judicial officers and court-employed mediators/evaluators in family law, but these programs do not have the inclusive approach employed by AFCC.

The organization continues to be the critical point of intersection for everyone who works in family law, providing opportunities for cross-professional communication and training.

One of our challenges for the coming decade will be to expand the availability of interdisciplinary professional training in cooperation with the Administrative Office of the Courts and the Trial Courts.

AFCC-CA Board of Directors

Hon. Jerilyn Borack-President
Sherrie Kibler-Sanchez, LCSW-President-Elect
Diane E. Wasznicky, J.D.-Vice President
Susan Ratzkin, J.D.-Treasurer
Carl F. Hoppe, Ph.D.-Secretary
Jane Ellen Shatz, Ph.D.-Past President
Jeanne Ames-Historian
Hon. Robert P. Applegate
George Ferrick, MFT
Steven Friedlander, Ph.D.
Saul Leopold, Ph.D., LCSW
Hon. Thomas Trent Lewis
Mary Elizabeth Lund, Ph.D.
Amy Rudd, MFT
Hon. Robert Schnider
Helen Stockdale, Esq.
Susan Williams, MFT

Conference Program/Planning Committee

Mary Elizabeth Lund, Ph.D. – Co-Chair
Dianna Gould-Saltman, J.D. – Co-Chair
Don Eisenberg, J.D.
George Ferrick, LMFT
Lisa Hacker, Ph.D.
Carol Hirshfield, Ph.D.
Carl F. Hoppe, Ph.D.
Sherrie Kibler-Sanchez, LCSW
Renee Lehr, Ph.D.
Saul Leopold, Ph.D., LCSW
Hon. Thomas Trent Lewis
Susan Ratzkin, J.D.
Renee Schwartz, MFT
Susan Williams, M.A.

JOIN AFCC TODAY AND SAVE!

AFCC membership is an investment in professional excellence. Register at the AFCC member rate and save up to \$50! Your membership will provide you with the latest information and most knowledgeable resources, saving you valuable time and money.

AFCC MEMBER BENEFITS INCLUDE:

Family Court Review:

AFCC's quarterly journal, *Family Court Review*, is the leading interdisciplinary academic and research journal for family law professionals. AFCC members receive a print subscription and online access to the entire collection, beginning with the first issue published in 1963.

Online Member Directory:

An international network of colleagues available through the AFCC online searchable directory.

AFCC Newsletters:

AFCC members receive a quarterly print newsletter, *AFCC News*, and electronic newsletter, *AFCC eNews*, that features the most up-to-date interdisciplinary topics on new legislation, programs, services, research and more.

Member Discounts:

AFCC members receive a 15% discount on AFCC publications, a 20% discount on publications from Blackwell Publishing, a 25% discount with J.M. Craig Press and insurance discounts through Complete Equity Markets.

HOW TO JOIN AFCC

You are invited to join AFCC online at www.afccnet.org.

JOINING AFCC – CA

It is imperative to note that joining National AFCC does not automatically enroll you as a member of the California Chapter. There is an additional \$35 fee to join AFCC – CA and this is done through the National AFCC website (www.afccnet.org).



ASSOCIATION OF FAMILY
AND CONCILIATION COURTS

The Rosetta Stone of Child Custody:

The Bar, the Bench, and Mental Health Experts Decoding Each Other's Philosophy and Practice



SCHEDULE AT A GLANCE

(full program starts on Page 2)



Friday, February 8, 2008

11:00am – 6:00pm	Registration
12:00pm – 5:00pm	Optional Excursion: Getty Villa
1:00pm – 6:00pm	Book Table/Exhibitor Forum
1:00pm – 5:15pm	Institutes (1-3)
6:00pm – 6:15pm	Welcome
6:15pm – 7:45pm	Opening Plenary
7:45pm – 9:00pm	Welcome Reception
9:00pm – midnight	AFCC-CA Hospitality Suite



Saturday, February 9, 2008

7:30am – 8:30am	Registration
7:30am – 8:30am	Continental Breakfast
7:30am – 5:00pm	Book Table/Exhibitor Forum
8:30am – 10:00am	Plenary
10:15am – 11:45am	Morning Workshops (1-4)
12:00pm – 2:30pm	Luncheon & Plenary Presentation
1:00pm – 2:30pm	Plenary
2:45pm – 4:45pm	Afternoon Workshops (5-8)
5:45pm – 10:00pm	Optional Excursion: Getty Center
7:00pm	Los Angeles Dine-Around
9:00pm – midnight	AFCC-CA Hospitality Suite



Sunday, February 10, 2008

7:30am – 8:30am	Continental Breakfast
8:00am – 8:30am	General Membership Meeting
8:30am – 10:30am	Plenary
10:45am – 12:45pm	Morning Workshops (9-12)
1:00pm – 4:00pm	AFCC-CA Board Meeting

The Rosetta Stone of Child Custody:

The Bar, the Bench, and Mental Health Experts Decoding Each Other's Philosophy and Practice

PRE-CONFERENCE INSTITUTES

Friday, February 8, 2008

1:00pm - 5:15pm

I1 The Use of the MMPI-2 and the Rorschach in Child Custody Evaluations

This will be a three-hour pre-conference institute that will focus on the value of using psychological testing and specifically the MMPI-2 and the Rorschach Inkblot Method in child custody evaluations.

It will describe both tests, present reliable information regarding the similarities and differences between the MMPI-2 and the Rorschach, offer a rationale for inclusion of these psychological tests in evaluations, and discuss the controversy generated by the use of testing in general, and the Rorschach in particular. It will discuss the strengths and weaknesses of these tests consistent with current research, discuss the appropriate qualifications of testers, and provide attorneys, judicial officers, custody evaluators, mediators, and other mental health practitioners useful information allowing them an increased ability to evaluate testing presented in custody evaluation reports.

Case examples will be presented to illustrate the value and utility of these tests.

A bibliography of relevant research, books, and articles will be provided as an additional database for workshop participants.

Presenters: Anthony J. Aloia PhD; Carl F. Hoppe, Ph.D.; Albert Gibbs, J.D.

I2 How Attorneys can Advocate for their Clients in the Parenting Plan Coordination Process

The role of attorneys is key to the success of the Parenting Plan Coordinator (PPC) process. Attorneys must be involved in the beginning and throughout the process so that they can advocate most effectively for their client. This lively workshop will use discussion, role-play, case presentation and questions to present LA County's newly developed systems for using PPCs effectively. Topics addressed will include: how to set up the case and define the issues and 'levels' of decision-making; framing requests of the PPC about decisions and process; suggesting draft orders and recommendations; challenging 'bad' orders; and monitoring the scope, ethics and performance of the PPC. The three experienced presenters have been intimately involved in developing the new model in LA.

Presenter: Angus Strachan, Ph.D., Lynette Berg Robe, Esq., and Honorable Thomas Trent Lewis

I3 Annual Domestic Violence Update Training

This year AFCC-CA is collaborating with LASC to provide this domestic violence update training. This institute will replace the annual domestic violence update program provided by the court. This 4-hour update will meet the requirements for the domestic violence training for court-connected and private mediators and evaluators. The training will include current research about the effects of domestic violence on children, legal update, resilience of children and families exposed to domestic violence. L.A. Superior Court will announce the speakers. Check the AFCC-CA website (www.afcc-ca.org) for updated session details.

Presenters: (To Be announced by LA Superior Court)



CONFERENCE SCHEDULE

Friday, February 8, 2008

11:00am – 6:00pm	Registration Ballroom Foyer
12:00pm – 5:00pm	Optional Excursion: Getty Villa
1:00pm – 6:00pm	Book Table & Exhibitor Forum Ballroom Foyer
1:00pm – 5:15pm	Institutes (1-3)
6:00pm – 6:15pm	Welcome
6:15pm – 7:45pm	Opening Plenary Ballroom

WELCOME

By Hon. Marjorie Steinberg, Supervising Judge Los Angeles Superior Court Family Law Department, and Sherrie Kibler-Sanchez, President AFCC California Chapter.

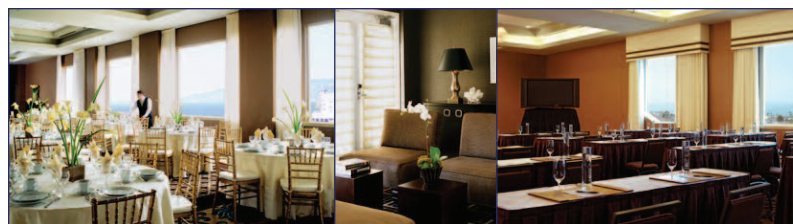
OPENING PLENARY

P1 The Philosophic Divide in Move-Aways:

There are continuing controversies about Move-Aways. Can sociological findings be reconciled with developmental psychological findings when it comes to parents moving away? Are moves a gender issue, a financial issue, a children's attachment issue or something else? Sanford Braver, noted researcher on the effect of moves on children, and Professor Scott Altman, a legal scholar, will present differing points of view with a Judge Melinda Johnson (Ret.) offering the pragmatic view from the bench. AFCC's Executive Director Peter Salem moderates.

Presenters: Sanford Braver, Ph.D.; Honorable Melinda Johnson (Ret.); Peter C. Salem, M.A.; Professor Scott Altman

7:45pm – 9:00pm	Welcome Reception Pool Side
9:00pm – midnight	AFCC-CA Hospitality Suite



The Rosetta Stone of Child Custody:

The Bar, the Bench, and Mental Health Experts Decoding Each Other's Philosophy and Practice



CONFERENCE SCHEDULE

Saturday, February 9, 2008

7:30am – 8:30am	Registration Ballroom Foyer
7:30am – 8:30am	Continental Breakfast Ballroom Foyer
7:30am – 5:00pm	Book Table & Exhibitor Forum Ballroom Foyer
8:30am–10:00am	Plenary Ballroom

PLENARY

P2 Abduction, Risk and Response

Parental abduction has become a serious concern with the high rates of divorce in the U.S. Janet Johnston's presentation, based upon a series of her research studies, will identify risk factors for serious custody violation and describe profiles of abducting parents. From the Center for Missing and Exploited Children, Yiota Souras, International Abduction Attorney, and Marsha Gillmer-Tullis, L.C.S.W. present law enforcement and legal response to abduction cases and working with recovered abducted children. Judge Thomas Trent Lewis moderates and presents dilemmas faced by judicial officers.

Presenters: Janet Johnston, Ph.D.; Marsha Gillmer-Tullis, LCSW; Honorable Thomas Trent Lewis; Yiota Souras, Esq.

10:15am – 11:45am **Morning Workshops (1-4)**

WORKSHOPS (1-4)

W1 Ethical and Effective Coaching of One Parent During A Child Custody Evaluation: Reconciling the Demands of Advocacy and Impartiality

More and more frequently, family law attorneys are retaining the consultation services of a mental health professional (MHP) to help clients prepare for child custody evaluations. These consultations, when ethically conducted, not only provide a valuable service to the attorney and the parent, but also benefit the child at issue in the evaluation. But there is some controversy about these consultations and a perception that they unethically manipulate and interfere with the evaluation process, and that they are almost always conducted in secret. This perception comes from the competing ethical demands of the attorney and MHP. While the attorney has an affirmative duty to prepare the client for the evaluation and to try to win the case, the MHP has a duty to remain impartial and not interfere with the evaluation process.

This workshop will examine how the family law attorney and MHP can work together to help a parent through the evaluation and still meet the ethical demands of their professions; the panel will discuss legal and ethical questions confronting the MHP, including points to be covered in the consultation retainer agreement and informed consent. It will then offer a six-step model specifically showing how the attorney can most effectively, and most beneficially use the MHP; what the MHP can be expected to do to help the parent prepare and achieve better outcomes, and at the same time not interfere with the evaluation process.

Presenters: Renee Lehr, J.D., Ph.D.; Christopher C. Melcher, Esq.

W2 The Co-Parent Project

A group of experienced co-parent counselors in Sonoma County, California, have implemented a new approach to working with high conflict families. They work in pairs, as co-therapists. Each of the therapists is assigned to work more closely with one of the parents, conducting an individual intake session as well as individual de-briefing sessions following each conjoint session. The heart of the co-parenting work, however, involves both parents and therapists (conjoint sessions) working toward reducing the conflict in the family, improving the communication, and improving their parenting. This panel will discuss the ways in which the Sonoma County Co-Parenting Project works, as well as its challenges and successes.

Presenters: Barbara Bowen, LCSW; Robert I. Hart, LCSW; Honorable Arnold D. Rosenfield; Dana Schneider, M.A., MFT

W3 Getting Off the Custody Litigation Carousel

This program will address the identification of the high conflict case and the specific services and orders that are most effective in reducing conflict and transitioning these families out of chronic litigation.

By providing the perspective of a judicial officer, minor's counsel, and the private attorney, this program will give specific direction to attorneys, court personnel and mental health professionals in specifying what court action is available to help these families and to determine the type of specific orders which should be requested when representing those caught in the recurrent cycle. In particular, this program is geared toward gathering and directing resources towards families that find themselves repeatedly involved in custody litigation with the goal of helping them end the seemingly hopeless and never-ending process.

Presenters: Keri Sepulveda Caetano, Esq.; Commissioner Michael J. Convey; Sandra Etue, Esq.

W4 Evaluation Process

This panel will demonstrate how the judge, evaluator, psychologist performing psychological testing and the children's therapist work together to complete the evaluation process. The panel will present an actual case in which a family comes to the court with allegations that mother is alienating the children and is clinically depressed. Father is asking for full custody. Mother is making counter allegations that father and his live-in girlfriend are verbally and emotionally abusing the three children. The parents have a history of high conflict and the police have been called many times to keep the peace. The family is referred for a child custody evaluation.

The panel will demonstrate how the evaluator relies on the children's therapist and the psychologist performing psychological testing on the parents, father's girlfriend, and the child experiencing emotional distress, for information and case consultation in order to give the judge the most complete history and assessment possible. The panel will describe how and why the recommendations were made for this family.

Presenters: Commissioner Josanna Berkow; Randi Scalise Johnson, MA, MFT; Debbie Katz, MA, NPT; Heidi Perryman, Ph.D.



The Rosetta Stone of Child Custody:

The Bar, the Bench, and Mental Health Experts Decoding Each Other's Philosophy and Practice

12:00pm – 2:30pm	Luncheon, Drown Award Plenary Presentation Ballroom
1:00pm – 2:30pm	Plenary Ballroom

PLENARY

P3 The Impact of Celebrity on the Lives of Children: Special Considerations or Special Treatment?

2007 produced some banner custody cases in the media, in which our panelists have been involved. In Los Angeles, celebrities may be movie stars, but in all locales there are divorcing parents who are celebrities: politicians, police chiefs, high tech millionaires, well known clergy. The court needs to balance the interest of the public, avoiding the appearance of a "Star Chamber" while at the same time safeguarding the interest of the children for their personal safety and their psychological well being.

Presenters: Judy Bogen, Esq.; Mark Kaplan, Esq.; Stan Katz, Ph.D.; Honorable Robert Schnider

2:30pm – 2:45pm	Break/Book Table/ Exhibitor Forum Ballroom Foyer
2:45pm – 4:45pm	Afternoon Workshops (5-8)

WORKSHOPS (5-8)

W5 Domestic Violence

Commissioner Scott Gordon, a former District Attorney and police detective, who served on Special Investigations and the Stalking and Threat Assessment Team, will present threat assessment techniques and give an update on changes in the law on Domestic Violence. Kathy Kuehnle, Ph.D., a nationally known expert in assessment in child abuse and domestic violence cases, will present assessment techniques, particularly assessment of children, and present research information about the effects of domestic violence on children.

Presenters: Commissioner Scott Gordon; Kathy Kuehnle, Ph.D.

W6 You Don't Have To Be A Celebrity To Be A Narcissistic Parent

Parents in high conflict custody cases may act in entitled and exploitative ways, so they appear insensitive to the needs of their children. These parents may reject their attorney's advice if it does not fit their grandiose plans and self-image. They may disregard agreements and court orders because they feel special. This panel will discuss the challenges faced by the attorney, the court, and the mental health professionals who try to redirect the high conflict parent to the needs of the child. Targeted parent education and group programs for high conflict parents is a promising approach. Court-ordered therapy with the parent and child may provide a place for the parent to learn to be more responsive to the child. The special master process may contain the exploitative behavior. Well constructed legal stipulations and court orders are necessary to do therapeutic work with these types of parents.

Presenters: Lisa Hacker, MFT; Honorable Thomas Trent Lewis; Susan Ratzkin, Esq.; Jane Ellen Shatz, Ph.D.

W7 Collaborations for Therapeutic Justice: A Continuum of Interventions by Family Court with Public Entities and Community Based Organizations

This panel will discuss the interplay between Family Court Services and First 5 as a cooperative model used in Santa Clara County. *Family Court Services* in Santa Clara County, and *FIRST 5 Santa Clara County*, the local government entity responsible for allocating legislatively authorized tobacco tax funds aimed at enhancing early childhood development and school readiness, have been engaged in the largest and most comprehensive known collaboration between a domestic relations Court and a publicly funded grantor dedicated to improving the lives of young children. Over the past five-years FIRST 5 has provided 3.5 million dollars for a range of care management, legal, psycho-educational programs, treatment, and related support services to assist families in the Family Court System, expanding through intra-court collaboration and coordination to include the Unified, Probate and DV Criminal courts. On the Court side, the program is based on a commitment to therapeutic justice with the understanding that litigation, mediation and investigation alone are insufficient to help many high risk families alleviate the serious problems such as extreme conflict, family violence, substance abuse and mental health difficulties which are bringing them to court in the first place. Judges and mental health professionals must have practical, humane and effective ways of helping these families connect with and actually obtain needed community and court based services aimed at addressing those problems. On the FIRST 5 side, the Commission is dedicated to providing a system of community-wide strategies to support high risk and cumulative risk children so that they can achieve their optimal physical and social-emotional development.

Presenters: Steve Baron, LMFT; Sandy Clark, LCSW; Lilly Grenz, LCSW; Melanie Daraio

W8 You Call Yourself an Expert: Critical Evaluation of Expert Testimony in Family Law Cases

Judicial Officers and attorneys are frequently presented with testimony from expert witnesses regarding parenting issues that are before the Court. Testimony may purport to summarize the state of psychological research or clinical wisdom, or present information based on therapeutic contact with a parent or child. Such expert testimony may provide important information to the Court, or may be so incomplete or biased that the information and opinions are misleading. Effective presentation and evaluation of expert testimony presents challenges to judicial officers, attorneys, and mental health professionals.

What guidelines exist for presentation of expert testimony to the Court? Does the expert have a responsibility to present contrary evidence? How can one differentiate between reliable and unreliable expert testimony? How can expert testimony be effectively challenged? Using commonly encountered examples, our interdisciplinary panel will address these and other cutting-edge issues regarding consideration of expert testimony.

Presenters: Donald S. Eisenberg, CFLS; Lyn R. Greenberg, Ph.D.; Honorable Robert Schnider; Matthew J. Sullivan, Ph.D.

5:45pm – 10:00pm	Optional Excursion: Getty Center
7:00pm	Los Angeles Dine-Around
9:00pm – midnight	AFCC-CA Hospitality Suite

The Rosetta Stone of Child Custody:

The Bar, the Bench, and Mental Health Experts Decoding Each Other's Philosophy and Practice



CONFERENCE SCHEDULE

Sunday, February 10, 2008

7:30am – 8:30am	Continental Breakfast Ballroom Foyer
8:00am – 8:30am	General Membership Meeting Ballroom
8:30am–10:30am	Plenary Ballroom

PLENARY

P4 Private Life, Public Parenting: Is a Parent's Sexual Behavior Relevant?

Just because it is interesting does not make it relevant or does it? We have cases that involve sexual addictions, transgender, adult entertainment. When a parent's sex life is out of the norm, whatever that is, it can be brought up as an issue in a custody case. John Sealy, M.D., an expert on sexual addictions and their treatment and Kathy Kuehnle, Ph.D., an expert on child abuse, among other things, present their perspectives on when a parent's sexual behavior is and is not relevant to parenting. Judy Curtin presents on representing the parents on either side. Judge Juhas describes the dilemmas faces by the bench.

Presenters: Judi Curtin, Esq.; Honorable Mark Juhas; Kathy Kuehnle, Ph.D.; John Sealy, M.D.

10:30am – 10:45am **Break/Book Table/
Exhibitor Forum**

10:45am – 12:45pm **Morning Workshops (9-12)**

WORKSHOPS (9-12)

W9 Creating Safe Orders in Domestic Violence Cases

Creating appropriate interim and long-term orders in the face of DV allegations is problematic. Most restraining order matters are handled quickly, and self-represented litigants may be ill-equipped to ask for what they want or to know what would be safe for their children. They may not know how to protect their legal rights or how to understand their orders. Attorneys have no way of knowing the reality of each parent's parenting capabilities, and in a "he said/she said" scenario, what level of violence exists. The court's mental health professionals screen a minority of these cases and many families leave court without the referrals they need. This panel will discuss how an understanding of the resources available will aid in negotiation and settlement of many DV cases, resulting in better orders for these families.

Presenters: Lilly Grenz, MSW, LCSW; Julie Saffren, Esq.; Honorable Shawna Schwarz

W10 Alignment, Estrangement and Alienation: Legal and Psychological Remedies

Since parent alienation was described in the 1980s, there have been several changes in the law which have aggravated the differences between parents. The motivation for alienation has increased and so has the resulting high conflict litigation. California

law was amended to make the amount of time parents have with their children a factor in setting child support. It is harder now to determine why a parent is seeking custody. The law was also liberalized so that it is easier for parents to remove their children from their community if they are primary caretakers. Thus, if parents do not fight for almost equal physical custody they run the risk of living in a different city than their children. If a parent needs to move away, they have an incentive to prevent the other parent from been involved with the children.

Intervention is needed to prevent the alienating behavior from continuing and to accomplish reunification when appropriate. The remedies vary according to the kind and severity of the behavior. Psychological interventions include education, reunification therapy, and in some cases de-programming. Legal interventions can include modification of custody orders, contempt proceedings, sanctions, or court review and monitoring. The panel will address case examples, with a focus on remedies for various ages of children and the various issues and problems parents have, including drug addiction and mental illness.

Presenters: Carl F. Hoppe, Ph.D.; Honorable Michael Paul Linfield; Peter M. Walzer, Esq.

W11 Bridging the Professional Gap: Working More Effectively with Family Law Attorneys by Understanding How Their Professional Obligations Translate into Practice

This panel provides insight into why family law attorneys do what they do. Differing professional responsibilities and ethical guidelines are the source of different practices which can lead to misunderstanding, rejection, roadblocks, or worse. Mental health professionals and others are often mystified by the behavior of their legal counterparts. The goal of this program is to address the source of the attorney's professional obligations as a means of "decoding" their conduct and fostering understanding and mutual respect between the two professions. His will enable attorneys and mental health professionals to work more effectively together and for the clients they serve.

Presenters: Richard Gottfried, JD, MBA, MA; Linda S. Gross, Esq.; Ellyn J. Stein, Esq.

W12 Therapeutic Interventions

Children at the center of custody disputes may be pervasively impacted by poor parenting, family violence, abuse and/or the dynamics of alienation and exposure to parental conflict. Estrangement, alienation, trauma, and related processes may lead to serious, sometimes permanent ruptures between parents and children. Both research and clinical experience suggest that the deterioration of important relationships, and the reinforcement of poor coping skills in children, can have significant, long term effects on children's development and adjustment.

Judicial officers frequently order some form of conjoint therapy for these families, but difficulties may arise if the therapist is not familiar with high conflict custody disputes, or if the treatment and related court orders are not sufficiently structured to promote success. This interdisciplinary panel will present a model for structured, child-centered conjoint therapy, including case examples and the types of support from the Court that may be essential to promote positive outcomes.

Presenters: Lynda Doi Fick, MA, MFT; Lyn R. Greenberg, Ph.D.; Honorable Michael Levanas

1:00pm – 4:00pm

AFCC-CA Board Meeting

The Rosetta Stone of Child Custody:

The Bar, the Bench, and Mental Health Experts Decoding Each Other's Philosophy and Practice

PRESENTER INFORMATION

About the Presenters

Anthony J. Aloia, Ph.D. practices in Torrance, California, specializing in custody evaluations, psychological testing, special master work, and court-ordered family therapy. A panel of judicial officers appointed him in 1990 as member of The Psychiatric Office Panel, Family Law Department, Los Angeles Superior Court. He was a faculty member and coordinator of internship training at the California School of Professional Psychology, Los Angeles. Since 1973 he has done over 200 presentations and seminars on topics including psychological testing, custody evaluations, mediation, collaborative divorce coaching, child specialist consultation, and child and adolescent psychology.

Professor Scott Altman teaches Family Law and serves as the Vice Dean at the University of Southern California Law School. Dean Altman's recent research focuses on child custody and divorce issues. He has published articles on commodification, coercion, blackmail, threats to litigate child custody, and equality norms applied to child custody. His publications include "A Theory of Child Support" (*International Journal of Law, Policy and the Family*, 2003); "Divorcing Threats and Offers" (*Law & Philosophy*, 1996); and "Beyond Candor" (*Michigan Law Review*, 1990).

Steve Baron, M.F.T., was Director of Family Court Services in Santa Clara County for 22 years. He was Adjunct Faculty of the National Council of Juvenile & Family Court Judges and has done trainings to state and national organizations on child abuse, domestic violence and substance abuse. He has written articles and contributed to others on subjects related to Juvenile Dependency Mediation and Family Court intervention for *Family Court Review* and for the *Journal of the Center for Families, Children & the Courts* among others. He is the recipient of *The Judge Len Edwards Champion of Peace Award* from the Santa Clara County Domestic Violence Council, the *Legal Advocates for Children and Youth Individual Award*, and the Santa Clara County Psychological Association *Award for Outstanding Contribution by a Mental Health Professional*.

Commissioner Josann A. Berkow is a certified family law specialist sitting in Family Law in Contra Cost County. She has served on various advisory committees of the California Judicial Council in the areas of Family Law and Judicial Education, taught extensively for the California Center for Judicial Education and Research, the National Council of Juvenile and Family Court Judges, the California State Bar Association, and the American Academy of Matrimonial Lawyers. She serves on the Board of Kid's Turn, a counseling program for families experiencing separation.

Judy Bogen, Esq., is a certified family law specialist and partner in the family law firm of Hersh, Mannis & Bogen, in Beverly Hills, California. She is Chair of the Beverly Hills Bar Association Family Law Section, Member of the Executive Committee of the Los Angeles Bar Association Family Law Section, and Member of the Family and Juvenile Law Advisory Commission, Judicial Council of the State of California. She is a frequent speaker on custody topics for the Beverly Hills and Los Angeles Bar Association events.

Barbara Bowen, L.C.S.W., is now in private practice in Santa Rosa and Walnut Creek, California, after working for almost 20 years in Family Court Services in Contra Costa County, California and Hennepin County, Minnesota as a mediator and custody evaluator. She has done presentations for Center for Families, Children and the Courts Bay Area Regional Committee, Contra Costa County Family Bar Liaison Committee, and Contra Costa County Family Bar Minor's Counsel Training.

Sanford Braver, Ph.D. is a professor of psychology at Arizona State University. His primary research interest over the last 15 years or so, in connection with Prevention Research Center, has taken him to explore the dynamics of divorcing families. A special emphasis is dealing with the issues facing divorced fathers as they struggle to maintain their parenting roles after divorce. His work has been published in over 60 peer-reviewed professional articles and chapters, and most recently in the acclaimed 1998 book "Divorce dads: Shattering the myths."

Keri Sepulveda Caetano, Esq., is a Certified Family Law Specialist practicing in Woodland Hills, California. She is Co-Chair of the Executive Committee, Family Law Section, San Fernando Valley Bar Association. She serves on the Family Law Mediation Panel/North Central and Northwest Districts, San Fernando Valley Bar Association.

Sandra Clark, MSW, L.C.S.W.: Sandy was the Director of Family Court Services, Santa Clara County from January 1992 to January 2003. She worked in Family Court Services for over twenty-two years as a Mediator, Evaluator, Assistant Director, and as Director. During the last six years as Director, she managed and participated in multi-collaborations of courts and counties on grant projects for supervised visitation, legal information for teen parents and in the development of grant programs for OWV Safe Havens and the FIRST 5/FCS Family Court Initiative. She retired from Superior Court in 2003 and presently works as a consultant under a FIRST 5 Santa Clara County/Superior Court grant with programs provided by The Center for Healthy Development.

Commissioner Michael J. Convey sits in the Family Law Department of the Los Angeles Superior Court in Van Nuys. He is a member of the California Judges Association, California Court Commissioners Association, and is on the Domestic Violence (Special) Committee.

Judi Curtin, Esq., is a certified family law specialist practicing in Orange County, California. She has been president of the Orange County Family Bar Association - Family Law Section and was voted 1996 Family Law Trial Lawyer of the Year by the Orange County Trial Lawyers Association. She is a member of AAML and a frequent speaker at various family law seminars.

Melanie Daraio, Program Manager, has been with FIRST 5 since the Care Management Initiative began in 2002. She has worked closely with the Court during most of that time beginning with the Needs Assessment that was done surveying families that had been through the Family Court System, during the time that a local Community Based Mental Health Agency, Eastfield-Ming Quong, conducted a research review of service models that are the most effective with families, and has been instrumental in creating many of the programs developed in the collaboration between the Family Court and FIRST 5 Santa Clara County.

Donald S. Eisenberg, Esq., past chair of AFCC-CA, is a certified family law specialist practicing in Long Beach California. He has 30 years experience devoted to "human issues" in divorce such as domestic violence, parent education and custody evaluations and is a frequent speaker on those issues. He extensive experience in international Child Custody Law and has published appellate decisions. He has been retained by mental health agencies to advise counselors and interns on their rights and obligations in problem custody cases

Sandra Etue, Esq., is a family law practitioner in Woodland Hills California, frequently appointed by judicial officers throughout Los Angeles County as Minor's Counsel in high-conflict custody disputes. She was on the planning committee and a panel member for "Fall 2007 Minor's Counsel Training," held by Association of Certified Family Law Specialists in conjunction with Los Angeles County Bar Association. She has been a frequent speaker in Los Angeles County on the role of Minor's Counsel.

The Rosetta Stone of Child Custody:

The Bar, the Bench, and Mental Health Experts Decoding Each Other's Philosophy and Practice

Lynda Doi Fick, M.F.T., practices in Diamond Bar, California, specializing in Dependency and Family Law Custody Evaluations and court-ordered treatment of children and families. She has done Multinational Trauma Evaluation at the request of the California Victims of Crime program. She has done presentations and trainings for mental health professional, academic and legal groups on child abuse and family reunification, monitored visitation, alienation and reunification, and custody evaluations. She received the L.A. Superior Court, Juvenile Dependency Division, Outstanding Evidence Code 730 Evaluator Award, 2005.

Albert R. Gibbs, Ph.D. practices in Los Angeles, California, specializing in custody evaluations, parent education groups for high-conflict divorced parents, psychological testing, and special master work. A panel of judicial officers appointed him in 1994 as member of The Psychiatric Office Panel, Family Law Department, Los Angeles Superior Court. He was Director of the Clinical Training, Family Assessment and Therapy Program at Julia Ann Singer Center and he was Senior Staff Psychologist at Cedars Sinai Medical Center. He has been a frequent speaker at bar and court programs in Los Angeles County.

Marsha Gilmer-Tullis, L.C.S.W., serves as the Director of the Family Advocacy Division for the National Center for Missing & Exploited Children. She is responsible for the coordination of all therapeutic services to the families of missing and/or exploited children and works proactively with treatment professionals and law enforcement on best practices for the reunification of children abducted by a parent as well as the complex treatment issues created by this crime. She has over 30 years of experience in the mental health and child welfare fields in both the public and private sector. She also served as an adjunct professor at the Ethelyn R. Strong School of Social Work Norfolk State University from 1994-1996.

Commissioner Scott Gordon sits in the Los Angeles County Superior Court Family Law. He served with the Los Angeles County District Attorney's Office for sixteen years and as a police officer and detective for the Santa Monica Police Department for eight years in a variety assignments including: Sex Crimes and Child Abuse Division, Special Investigations and the Stalking and Threat Assessment Team. He was named "Prosecuting Attorney of the Year" by the Los Angeles Bar Association, "Humanitarian of the Year" by the Los Angeles Commission on Assaults Against Women and received the "Excellence in Teaching Award for 2003" from Southwestern University School of Law. His first book, *Shadow Enemies: Hitler's Secret Terrorist Plot Against the United States*, was recently published by Lyons Press.

Richard Gottfried, J.D., M.B.A., M.F.T., practices in West Los Angeles with specialties in counseling for children of separated and divorced families, co-parenting counseling, mediation, and collaborative divorce coaching and child specialist services. He practiced law 1984-1995, including divorce mediation. He has done presentations on custody and family law topics for the State Bar of California, Continuing Education of the Bar, the Los Angeles Collaborative Family Law Association, the Santa Monica Bar Association and other groups.

Lyn Greenberg, Ph.D., is Co-Chair, Joint Working Group on Representation and Advocacy for Children, American Psychological Association (APA) & American Bar Association and of the Forensic Specialty Group, Division of Family Psychology, APA, and Chair of Continuing Education, Division of Family Psychology (APA). She practices in Los Angeles California, specializing in child custody evaluations and treatment and consultation with court-involved children and families. Her numerous publications and presentations include Greenberg, L.R., Gould-Saltman, D.J., Schnider, Judge Robert (2006) "The problem with Presumptions – A Review and Commentary."

J. Child Custody 3/4, 141-174; Greenberg, L.R., Gould, J., Gould-Saltman, D., and Stahl, P. (2003). "Is the Child's Therapist Part of the Problem? What Judges, Attorneys and Mental Health Professionals Need to Know about court-Related Treatment for Children." *Family Law Quarterly*, Summer 2003, 39-69

Lilly Grenz, MSW, LCSW, is the Director of Santa Clara County Family Court Services, which provides child custody mediation, evaluation, and conciliation counseling services to Family Court clients and to Unified Court clients as well as Dependency Mediation Services to families and professionals involved in the Juvenile Dependency Court system. She is active in community committees such as the Children's Issues Committee of the DV Council, the Interagency Committee of the Child Abuse Council of which she was the chair, and participates in several collaborative grants such as the FIRST 5 Care Management Grant, Safe Haven grant, Access grant and Collaborative Justice Grant which funds the Family Treatment Court.

Linda Gross, Esq., is a Certified Family Law Specialist practicing in Santa Monica, California. Her awards include Los Angeles Magazine's Southern California Superlawyers 2005, 2006, 2007 and Pro Bono Panel Volunteer of the Year, 1995. Her publications include "Developing, Managing and Surviving a Family Law Practice," (Continuing Education of the Bar, 1996) and "Parental Alienation Syndrome: A New Name for an Old Game," (Co-Author: Audrey Wishnick Greenberg) 12 L.A. County Family Law News & Review (No.1) Winter 1991.

Lisa Hacker, M.F.T., is in private practice in Sherman Oaks, California. She has been a teacher for the Parents and Children Together (PACT) Program for Los Angeles Superior Court in Van Nuys for nine years and runs the Parents in Conflict group program for high conflict parents, and "Caught in the Middle" a children's support group for high conflict cases. She has published on children's issues in divorce and is a frequent speaker in the Los Angeles area.

Robert Hart, L.C.S.W., is in private practice in Santa Rosa, California, working with court-referred families. He does co-parenting counseling, parent education, special master and case management for high conflict divorce families and also provides assessment and psychotherapy for children and adolescents with a wide range of disorders.

Carl F. Hoppe, Ph.D. practices in Beverly Hills, California, specializing in psychological testing, custody evaluations, and psychotherapy. He was appointed by a panel of judicial officers in 1976 as member of The Psychiatric Office Panel, Family Law Department, Los Angeles Superior Court. He has taught at California School of Professional Psychology and been a clinical supervisor at UCLA Neuropsychiatric Institute. His papers include, "Characteristics of Custody Litigants: Data from the Southern California Group," American Psychological Association, 1994, and Strong, D.R, Greene, R.L., Hoppe, C.F., Johnston, T., Olesen, N. (1999) "Taxometric Analysis of Impression Management and Self-Deception on the MMPI-2 in Child custody Litigants." *J. Personality Assessment*.

Hon. Mark Juhas sits in the Family Law Department of Los Angeles Superior Court. He is adjunct faculty in family law at Southwestern School of Law and has been on the faculty of the 2006 and 2007 Family Law Institute for the Judicial Council of California, Administrative Office of the Courts.

Hon. Melinda A. Johnson (Ret.) served on the Superior Court for twenty years, specializing entirely in family law. Considered one of Ventura County's top judges, she has been ranked as outstanding by the local bar association. Judge Johnson has taught and chaired the CJSP family law class and has taught at CFLR's Trial Advocacy Course. After retiring last October, she has focused her attention on working as a mediator and arbitrator through JAMS, where she is part of their Family Law Initiative.

The Rosetta Stone of Child Custody:

The Bar, the Bench, and Mental Health Experts Decoding Each Other's Philosophy and Practice

Randi Scalise Johnson, M.F.T. practices in Walnut Creek, California, specializing in child custody evaluations, mediation, co-parenting counseling and family therapy, assessing allegations of domestic violence and child abuse. She has provided training on mediation and custody evaluations and was the creator and coordinator for an Orientation Program at Family Court Services in Contra Costa County. She has done numerous presentations connected with the court and the bar in Contra Costa County.

Janet Johnston, Ph.D., is a professor in the Department of Justice Studies, San Jose State University. For almost three decades, she has specialized in counseling, mediation and research with high-conflict, litigating divorcing couples and their children with special attention to domestic violence, child abduction and alienated children. A frequent featured speaker nationally and internationally, she has published more than 60 papers, co-authored two books (*Impasses of Divorce* and *In the Name of the Child*), two treatment manuals (*High Conflict, Violent and Separating Families* and *A Safe Place to Grow*) and a book of therapeutic stories for children (*Through the Eyes of Children*). Jan Johnston has also been the recipient of honors from the Association of Family & Conciliation Courts (2007; 2000; 1996; & 1993), from the Academy of Family Mediators (2000) and from San Jose State University (2007).

Mark Kaplan, Esq., practices family law and civil litigation in Los Angeles, California. He has received a large amount of media attention for his handling of celebrity clients in divorce cases. He is a member of the Beverly Hills, Los Angeles, and American Bar Associations.

Debbie Katz, M.F.T., practices in Walnut Creek, California, specializing in custody evaluations, mediation, divorce and stepfamily issues, and co-parenting. She was a mediator and child custody evaluator intern at Contra Costa Family Court Services. She has done mediation training and done numerous presentations on parenting adolescents, single parents and stepfamilies.

Stan Katz, Ph.D., is a forensic psychologist and custody evaluator with a practice in Beverly Hills California. He has been an expert witness in child sexual abuse civil and criminal cases. He has been a technical advisor for several television programs on child abuse and other family problems. He has been featured on two television series and appeared on several TV and radio programs including Oprah Winfrey, 20/20 and the Today Show. His publications include "Punish or Treat: the Case for Multidisciplinary Treatment of Abused Children and Their Families", *Crime Prevention Review*, July, 1979, with co-authors J. Kent and Anthop; and books *False Love and Other Romantic Illusions* (1988) and *Success Trap*, (1990) Ticknor & Fields, co-authored with A. Liu.

Kathy Kuehnle, Ph.D., is an assistant professor in the Department of Mental Health Law and Policy at the University of South Florida and has a private practice specializing forensic evaluations in family law and dependency courts and in the training of and consultation to professionals in the judicial, child welfare, and educational systems. Her publications include Kuehnle, K., & Drozd, L. (Eds. 2006). *Child custody litigation: Allegations of child sexual abuse*. Binghamton, N.Y.: Haworth Press and numerous journal articles.

Renee Lehr, J.D., Ph.D., is a licensed clinical psychologist in private practice in Santa Monica and is a mental health court referee for L.A. Superior Court. For almost 20 years, her work has focused on custody and access issues and child and family adjustment to divorce as a mediator and custody evaluator for Los Angeles Superior Court and in private practice. Dr. Lehr also does collaborative cases, special mastering and consultation to family law attorneys. She has been an invited speaker at many family law events in Los Angeles.

Hon. Michael Levanas sits in L.A. County Superior Court, Santa Monica, California in Family Law. Prior to being appointed to the bench in 2002, he practiced law with a specialty in Dependency, Family Law, and Personal Injury. Judicial officers described in a Daily Journal article Judge Levanas work when he was a lawyer in Dependency Court: "Levanas enjoyed enormous credibility among the judges... He was one of the finest attorneys I had the privilege of working with... They don't get any better than he was."

Hon. Thomas Trent Lewis sits in L.A. County Superior Court, Los Angeles Central District, in Family Law. Prior to his appointment as a judge, he practiced family law and served as lead appellate counsel on 15 cases. He has been active in legislative matters concerning family law in California through his participation in the Conference of Delegates of the State Bar of California. He has lectured frequently on family law topics at Los Angeles County Bar San Fernando County Bar Family Law Section meetings and conferences and at Continuing Education of the Bar trainings. He has been president of the San Fernando Valley Bar Association and Chair of the California Board of Legal Specialization.

Hon. Michael Linfield sits in Family Law in Los Angeles County Superior Court and previously sat in Domestic Violence. He is on the Judicial Council Family Law Education Advisory Committee. After graduating from Harvard law School, he practice law and was an adjunct professor at University of West Los Angeles, School of Law. He has worked as a Special Liaison to Governor Jerry Brown on pension issues and was a legislative and public affairs consultant.

Christopher Melcher, Esq., practices family law as a partner in Walzer and Melcher, L.L.P. in Woodland Hills California. He has been a speaker and moderator for Fundamentals of Family Law Practice with the Continuing Education of the Bar (CEB), and the Family Law Symposium, California State Bar Family Law Section.

Heidi Perryman, Ph.D. practices in Lafayette, California, doing individual and family therapy with children, adolescents and adults, psychological assessment and reports for family court. She is an expert witness for Contra Costa and Alameda County Superior Court. She has done papers and presentations on working with personality disorders in family law, attachment and families, interviewing children, custody needs of the special child, and reconnecting children to absent parents.

Susan Ratzkin, Esq., practices in Thousand Oaks, California with a particular emphasis on high conflict custody cases. She is Treasurer of AFCC-CA, President of the Mexican American Bar Association of the Ventura County Bar Association, and Board Member of the Ventura County Bar Association. She received the Ventura County Bar Association Volunteer Services Program Award in 2004-2005 and the California State Bar, Pro Bono Service Award, Sole Practitioner, 2005.

Lynette Berg Robe, Esq., is a certified family law specialist who practices in Studio City, California. She is on the State Family Law Executive Committee, Editor of the California Family Law News. She is a member of the L.A. County Bar Family Law Section Executive Committee, Co-Chair of the Parenting Plan Coordinator development committee and is on the Legislative Committee. She is on the Editorial Board for Journal of Child Custody. She has received numerous awards for her pro-bono work. She has published a number of articles relating to child custody and legislative issues.

Hon. Arnold D. Rosenfield is a judge of the Superior Court of California, Santa Rosa County, in Family Law. He was former presiding judge of the Juvenile Court. He is a member of the Judicial Council Advisory Committee on Juvenile/Family Law and has been an instructor for Center for Judicial Education and Research in family, juvenile and domestic violence. He is and adjunct professor at Sonoma State University.

The Rosetta Stone of Child Custody:

The Bar, the Bench, and Mental Health Experts Decoding Each Other's Philosophy and Practice

Julie Saffren, Esq. is a solo practitioner in Family Law with a focus on domestic violence and custody issues. She was formerly staff attorney at Support Network for Battered Women in Mountain View, CA. She is one of the co-creators of DVLSR (Domestic Violence Limited Scope Representation), a grant-funded collaborative with the Pro Bono Project of Silicon Valley. She is a lecturer at Santa Clara University School of Law. She is a member and former chair of the San Jose Regional Standing Subcommittee for the Family Law Executive Committee of the State Bar, reviewing legislation for its impact on victims, families and pro pers. In May 2007, she was appointed to Santa Clara County's Domestic Violence Council. In June 2007, she was awarded "Barrister of the Year" by the Santa Clara County Bar Association.

Peter Salem, M.A. is executive director of the Association of Family and Conciliation Courts (AFCC) and teaches mediation at Marquette University Law School. He formerly served as director and mediator of Mediation and Family Court Services in Rock County. He is co-editor (with Jay Folberg and Ann Milne) of the new book, "Divorce Mediation: Models Techniques and Applications,"

Dana Schneider, M.A., M.F.T., is a lecturer in psychology at California State University Sonoma and has a private practice in Santa Rosa California, specializing in mediation, special master work, and counseling with high conflict families. She has published in the Journal of Divorce and Remarriage and made numerous presentations on working with children and families going through divorce, including to the Sonoma County Bar Association.

Hon. Robert Schnider has been the Supervising Judge of the Family Law Department of L.A. County Superior Court since 2005. In 2000, he became the only judicial officer assigned to family law ever to receive the L.A. Bar Association Outstanding Jurist Award. He is on the Board of the AFCC California Chapter and is on the Family Court Review editorial board. He was an adjunct professor at Loyola Law School teaching Family Law, has lectured for the Continuing Judicial Studies Program to teach family law to incoming California family law judicial officers and made presentations to many other professional organizations. He has authored and co-authored articles presumptions for custody, court-ordered counseling, and legislative issues in family law.

Hon. Shawna Schwarz was appointed Commissioner of the Juvenile Dependency Court in 2001. In 2006, she became a Superior Court Judge for Santa Clara County and soon sat in Family Court. Judge Schwarz hears domestic violence, elder abuse, civil harassment, and workplace violence restraining orders. In addition to her caseload, Judge Schwarz provides trainings on dependency and domestic violence issues. She has trained over 1,000 social workers, community based organization staff and community members on the overlap of domestic violence and child maltreatment. In addition, she trains court appointed special advocates and various service providers on the juvenile dependency process.

John R. Sealy, M.D., is Medical Director of the Sexual Recovery Program at Del Amo Hospital in Torrance California, Attending Staff in Child Psychiatry at Harbor/ULCA Hospital and in private practice in Torrance, California. In 2005 he became a Distinguished Life Fellow of the American Psychiatric Association. He is on the editorial board and has numerous publications in the Journal of Sex Addiction and Compulsivity. He has frequently gives presentations on substance abuse and sexual addictions.

Jane Shatz, Ph.D., practices in Beverly Hills, California, specializing as a custody evaluator, mediator and parenting plan coordinator. She is past president of the Association of Family and Conciliation Courts California Chapter. She was an assistant professor of psychology at

University of Wisconsin, a lecturer in psychology at U.S.C. She has numerous publications including Shatz, J.E. and LaViolette, A. (1998), "For Our Children: Helping Parents Help Their Kids: A 12 Week Curriculum for Never Married, Separated or Divorced Parents Where Domestic Violence Has Been an Issue."

Yiota Souras, Esq., is Deputy Director for the National Center for Missing and Exploited Children in Alexandria, Virginia. She is in charge of a range of services available to parents and attorneys relating to international family abductions, and she coordinates the Judicial Advisory Council to facilitate judicial communications concerning international family abductions. She is a member of the New York and District of Columbia Bars. Her past work has included representation of Guantanamo Bay detainees and drafting court papers and U.S. Supreme Court amicus briefs in relation to those cases.

Ellyn Stein, Esq., practices family law in Century City California. She is a Member of the Board of the Los Angeles Collaborative Family Law Association and a Member of the Family Law Sections Executive Committee of the Beverly Hills Bar Association. She has participated in L.A. County Bar's Introductory Trial Advocacy Program (2003), Introductory Collaborative Divorce Training (September, 2003), Advanced Divorce and Family Law Mediation Training (December, 2003), the Court of Appeal for the Second Appellate District's Appellate Mediation Training Program (June, 2004), and Advanced Collaborative Divorce Training (August, 2005).

Angus Strachan, Ph.D., is a psychologist in Santa Monica who provides custody evaluations, parenting coordination, mediation, child and family therapy. He is on the Parenting Plan Coordinator development committee of the L.A. County Bar Family Law Section and was an invited speaker for the AOC/AFCC-CA 2006 program on Mental Illness and Divorce. He was an adjunct professor at U.C.L.A. and has published research on severe mental illness, family communication, and children's perception of parents in divorce. He has served on the Board of the California Psychological Association and received the Silver Psi in recognition of his service.

Matthew Sullivan, Ph.D., is on the AFCC Task Force on Model Standards for Parenting Coordinators and Special Masters and on the American Psychological Association Collaborative Working Group on Psychological and Legal Interventions with Parents, Children and Families. He practices in Santa Clara County, California, specializing in forensic psychology. He has done numerous trainings and presentations nationally and internationally to mental health, legal, and judiciary groups. His publications include, "Ethical, Legal and Professional Practice Issues involved in Acting as a Psychologist Parent Coordinator in Child Custody Cases," *Family Court Review*, Vol. 41, No. 3, July 2004; "Guidelines for Parenting Coordination," co-authored with AFCC Task Force on Parenting Coordination, *Family Court Review*, Vol. 44, No. 1, January, 2006; "Family Systems," chapter co-authored with Jamie McHale, *Handbook of Clinical Psychology*, Alan Gurman (Ed.) 2007.

Peter Walzer, Esq., is a Certified Family Law Specialist, Fellow of the American and International Academies of Matrimonial Lawyers, and was Chair of the Executive Committee of the State Bar of California, Family Law Section, 2005-2006. He has been a lecturer for the Continuing Education of the Bar, "Fundamentals of Family Law," and "Fundamentals of Marital Dissolution," and other topics; for Los Angeles County Bar Association, "Winning the Custody Dispute: Effective Legal and Psychological Strategies," and for many other organizations on family law topics. His articles include "Making Foreign Divorce Judgments Enforceable in the United States," co-authored with Laurel Brauer, *International Family Law*, September 2001, and *FairShare, The Matrimonial Law Monthly*, March 2000.

The Rosetta Stone of Child Custody:

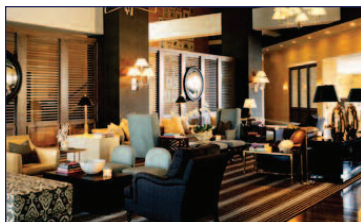
The Bar, the Bench, and Mental Health Experts Decoding Each Other's Philosophy and Practice

TRAVEL ARRANGEMENTS

Hotel Information



The Sheraton Delfina
530 West Pico Boulevard
Santa Monica, CA 90405
sheratonsantamonica.com



AFCC-CA was fortunate to procure the Santa Monica Delfina as its home for the 2008 conference. The conference hotel room rate is an unusual opportunity to stay in one of the most desirable areas of the Los Angeles area. The plenary sessions will be held in the Ballroom with views of the mountains and the Pacific Ocean. Participants at Los Angeles County Bar Association functions have given the conference facilities and catering very high ratings.

Perched above the Santa Monica shoreline you're sure to feel inspired at the Sheraton Delfina Santa Monica Hotel. Kick back and relax in one of the 307 thoughtfully redesigned guest rooms and suites. Enjoy inspiring views from your private balcony, and stay connected with High Speed Internet Access. Newly imagined meeting facilities combine breathtaking coastline views with great cuisine and high standards of service.

Overlooking Santa Monica, the mountains, and the Pacific Ocean, the impressive setting is inspiring. Swim and surf through the crashing ocean waves with your family or recharge at the fitness center, open all day and night. You'll also find golf, tennis, rollerblading, and sailing right in our own backyard.

There are a limited number of rooms reserved at the conference room rate of \$189.00 single/double occupancy, so reserve early at the toll free number (888) 627-8532 and reference Association of Family and Conciliation Courts - California Chapter when making reservation to insure the room rate. Reservations must be received by the hotel on or before January 15, 2008. For other hotel information and direct calls to the hotel phone (310) 399-9344.



Parking

Parking for the day is free for conference attendees. Overnight parking for hotel guest attendees is \$24 per night with complimentary first night.

Airline Travel

Both the Los Angeles International Airport (LAX) and the Burbank Airport (BUR) are served by most major airlines. The Sheraton Delfina, Santa Monica, is accessible from either airport.

Ground Transportation

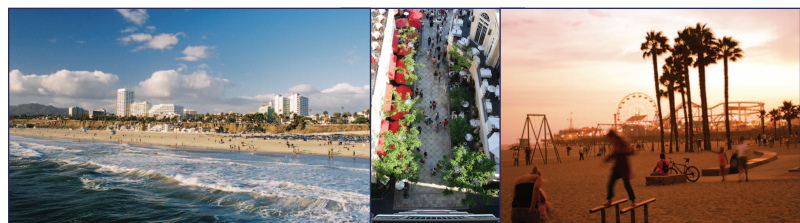
From Los Angeles International Airport, taxi fare averages \$25.00 and the Super Shuttle is \$18.00 per person. See websites for current transportation information:

Los Angeles International Airport (LAX): www.iflylax.com
Burbank Airport (BUR): www.burbankairport.com

Santa Monica Sights and Attractions

The Sheraton Delfina is four blocks from the beach, three blocks south of the Santa Monica Pier, within walking distance of some of the most renowned restaurants, recreational activities and shopping in the Los Angeles area. The beaches on either side of the Santa Monica Pier are popular for their white sands and accessibility. A paved beach path runs along there, allowing you to walk, bike, or skate to Venice to the south and Malibu to the north. The Santa Monica Promenade is several blocks from the hotel. Enjoy fine restaurants, live entertainment, movie theatres, shopping, a local artists' scene and a weekly farmer's market on this European-style walkway in the heart of Santa Monica. Main Street in Santa Monica, three blocks from the hotel, is another destination for shopping, art, and dining. A free Santa Monica shuttle connects the hotel with restaurants and shopping from Santa Monica to Venice.

More information at www.santamonica.com.



Optional Excursions to Getty Villa and Getty Center

AFCC-CA has made arrangements for a limited number of reservations and transportation for attendees and/or their guests to visit the newly re-opened Getty Villa in Malibu on Friday 12:00–5:00 P.M., and the world renowned Getty Center in Brentwood on Saturday 5:45–10:00 P.M. A bus will pick up and return to the Sheraton Delfina.

Getty Villa Excursion - Malibu, California

The Getty Villa, a reproduction of a first century Herculeum villa and gardens, provides an intimate experience of life in ancient Rome and contains Greek, Roman, and Etruscan antiquities, dating from 6,500 B.C. to A.D. 400. It is not possible to visit the Getty Villa without prior arrangement for transportation through AFCC-CA.

Getty Center Excursion - Brentwood/Bel-Air, California

The Getty Center presents the Getty's collection of Western art from the Middle Ages to the present against a backdrop of dramatic architecture, tranquil gardens, and breathtaking views of Los Angeles and the Pacific Ocean. The Getty Center exhibits are open until 9:00 P.M. Saturday. Dinner is available both at the highly rated restaurant and a café on premises.

Both excursions are optional and transportation space is limited. Excursion reservations must accompany your Conference Registration. For more Getty information visit www.getty.edu.



The Rosetta Stone of Child Custody:

The Bar, the Bench, and Mental Health Experts Decoding Each Other's Philosophy and Practice

OF SPECIAL NOTE

AFCC-CA Hospitality Suite

AFCC-CA's Hospitality Suite will be open in the evening for informal networking and refreshment. The Hospitality Suite is a great place to catch up with old friends and make new ones. Please wear your name badge.

Los Angeles-Santa Monica Dine-Around

Sign up on site and join a group of 8 – 10 for dinner at a local restaurant. Saturday evening will be your opportunity to dine with friends and colleagues. Restaurant descriptions and sign up sheets will be available in the conference registration area. Participants are responsible for food, beverage and transportation costs.

Special Needs

If you have special meal requests or other special needs, please note this on the registration form and you must register by mail. The Sheraton Delfina meets ADA requirements. All sessions will be smoke free.

Photographer Credits

Front and Back Cover Photo: Robert Landau

Pier Entrance Photo (*found in conference contributors section*): D Car

CONTINUING EDUCATION

Continuing Education Credits

AFCC will provide a certificate of conference attendance. The certificate will verify attendance at conference sessions and may be used to apply for continuing education credits with the registrant's accrediting institution.

Attorneys: The program has been submitted to the California State Bar for continuing legal education approval. Any fees due the California Bar will be the responsibility of the MCLE applicant.

Psychologists: The Association of Family and Conciliation Courts (AFCC) parent organization is approved by the American Psychological Association to sponsor continuing education for psychologists. AFCC maintains responsibility for this program and its content.

Mental Health Professionals: All Institutes, Plenaries, and workshops meet the qualifications for continuing education credit for LCSW's and MFT's as required by the California Board of Behavioral Science. The Superior Court of Los Angeles, Family Court Services, BBS provider number 1725, is a co-sponsoring agency for this conference and will maintain responsibility and records for attendance verification. Attendance records will be archived by this agency following this conference.

California Child Custody Evaluators and Mediators: The Institutes and Conference provide up to 16 hours of child custody evaluator/mediator training or CEUs. DV workshops meet the qualifications for California Child Custody Evaluation and Domestic Violence Update training (including 4.0 domestic violence update hours).

CONTINUING EDUCATION PROVIDED BY THE INSTITUTES AND CONFERENCE

Attorneys:

MCLE: The Institutes provide 4 hours and the Conference provides 12 hours of continuing MCLE credits.

CFLS: The Institutes provide 4 hours and the Conference provides up to 12 hours in the following required topics toward the educational requirement for CFLS certification: dissolution of marriage; mediation; custody of children; psychological and counseling aspects of dissolution of marriage; problems of domestic violence.

Psychologists:

The Association of Family and Conciliation Courts (AFCC) parent organization is approved by the American Psychological Association to sponsor continuing education for psychologists. AFCC maintains responsibility for this program and its content. The Institutes are eligible for up to 4 hours and the Conference is eligible for up to 12 hours continuing education for psychologists. Workshop 7 is not eligible for continuing education for this discipline.

Mental Health Professionals:

LCSW and MFT: The Institutes provide 4 hours and the Conference provides 12 hours of continuing education for LCSW's and MFT's as required by the California Board of Behavioral Science. Superior Court of Los Angeles, Family Court Services, BBS provider number 1725, is a sponsoring agency for this conference and will maintain responsibility and records for attendance verification. Attendance records will be archived by this agency following this conference.

California Child Custody Evaluators and Mediators:

The Institutes provide 4 hours and the Conference provides 12 hours toward either initial or continuing education required for child custody evaluators and mediators per California Rules of Court 5.225, 5.210 and 5.230. The views expressed are those of the trainers and do not necessarily represent the official positions or policies of the California Judicial Council or the Administrative Office of the Courts.

Domestic Violence Training:

Pre-Conference Institute I3 (4 hours) and Conference Workshops W5 and W9 (4.0 hours total) are two opportunities to obtain the Domestic Violence Update Training / Spousal or Partner Abuse, pursuant to California Rules of Court 5.230.

Pre-Conference Institute

Annual Domestic Violence Update Training

For the Pre-Conference Institute I3, the Los Angeles Superior Court is arranging for continuing education credits for psychologists, LCSWs, and MFTs and for AOC approval. Los Angeles Superior Court, Family Court Services, is approved by the MCEP Accrediting Agency to sponsor continuing education for psychologists and will be applying for CEU for the DV Update Training (for the Pre-Conference Institute).

The Rosetta Stone of Child Custody:

The Bar, the Bench, and Mental Health Experts Decoding Each Other's Philosophy and Practice

The California Chapter of the Association of Family and Conciliation Courts

Invites You to be a Conference Contributor

Donors will be recognized in the Conference Program and will be publicly recognized at our Opening Plenary session.



AFCC-CA ANNUAL CONFERENCE CONTRIBUTORS: *(as of Nov. 1, 2007)*

ROSETTA STONE:

- Law Offices of Vicki J. Greene

MASTER CRYPTOGRAPHER:

- Al Gibbs, Ph.D., Co-Parent Solutions.
- Lund & Strachan, Psychological Corporation
- The San Diego Foundation Willis & Jane Fletcher Family Fund III;
- Carl Hoppe & Dr. Diane Fletcher-Hoppe

DILIGENT SEEKER:

- Harris Ginsberg, LLP
- Meyer, Olson & Lowy, LLP



ROSETTA STONE \$2,000:

Donors receive a 1/2 page advertisement in the Conference Program and one admission to the conference



MASTER CRYPTOGRAPHER \$1,000:

Donors receive a 1/4 page advertisement in the Conference Program and one admission to the conference



DILIGENT SEEKER \$200:

Donors receive a business card size advertisement in the Conference Program

Contribution Registration Form

Please type or print clearly. This form may be duplicated.

First Name _____ M.I. _____

Last Name _____

Title/Profession _____

Organization _____

Street Address _____

City _____

State _____ Zip Code _____

Phone _____

Fax _____

Email _____

DONATION

- ☐ Rosetta Stone \$2,000.00
- ☐ Master Cryptographer \$1,000.00
- ☐ Diligent Seeker \$200.00

ADVERTISEMENT ARTWORK

Please mail a clear copy of your advertisement along with your completed form and payment to:

AFCC-CA

1336 N. Moorpark Road, #185, Thousand Oaks, CA 91360

If you have an electronic file of your advertisement, also send it electronically to: **afccsca08@aol.com**

PAYMENT INFORMATION

Make checks payable to AFCC-CA

- ☐ Payment enclosed (U.S. currency only please)

- ☐ Please charge my credit card ☐ Visa ☐ MasterCard
- Sorry, we do not accept American Express, Diners Club or Discover*

Card Number _____

Expiration Date ____ / ____

Card Holder's Signature _____

The Rosetta Stone of Child Custody:

The Bar, the Bench, and Mental Health Experts Decoding Each Other's Philosophy and Practice

Registration Form

Register on-line at www.afcc-ca.org

The Sheraton Delfina – Santa Monica, California

Please register by January 10, 2008 to ensure early registration discount rate.

Please type or print clearly. This form may be duplicated.

First Name _____ M.I. _____ Last Name _____ Degree _____

Title/Profession _____ Organization _____

Street Address _____

City _____ State _____ Zip Code _____

Phone _____ Fax _____ Email _____

Name of Guest/Spouse _____
(If they are registering at Guest/Spouse rate)

California Superior Court Staff Registrant: Court _____ Supervisor _____
(Must complete this additional information and register by mail)

Special needs? _____ Meals _____ Access _____ Other _____ Please provide details _____

February 8 – 10, 2008

PRE-CONFERENCE

☐ Registration Fee\$75.00 \$ _____

CONFERENCE

☐ Registration Fee \$495.00 \$ _____

Conference Discounts (Subtract the following discounts only from the Conference Registration Fee. Multiple discounts may be taken. Discounts do not apply to Pre-Conference Institutes.)

☐ AFCC Membership (\$50.00) \$ _____

☐ Early Registration (by 1-10-08) (\$50.00) \$ _____

☐ California Superior Court Staff (\$100.00) \$ _____

☐ 2008 Conference Shepherd Staff .. (\$100.00) \$ _____

☐ 2008 Conference Presenter (\$50.00) \$ _____

GUEST/SPOUSE

☐ Registration Fee\$100.00 x _____ \$ _____
(Plenaries & Meals only)

OPTIONAL EXCURSIONS

☐ Getty Villa\$25.00 x _____ \$ _____

☐ Getty Center\$25.00 x _____ \$ _____

TOTAL \$ _____

Registration includes two continental breakfasts, a luncheon, a reception, and the conference materials.

SESSION SELECTIONS	PRE-CONFERENCE (Please select one session)
	Friday Institutes: <input type="checkbox"/> I1 <input type="checkbox"/> I2 <input type="checkbox"/> I3
	CONFERENCE (Please select one session from each group)
	Sat Morning Workshop:
	<input type="checkbox"/> W1 <input type="checkbox"/> W2 <input type="checkbox"/> W3 <input type="checkbox"/> W4
	Sat Afternoon Workshop:
	<input type="checkbox"/> W5 <input type="checkbox"/> W6 <input type="checkbox"/> W7 <input type="checkbox"/> W8
	Sun Morning Workshop:
	<input type="checkbox"/> W9 <input type="checkbox"/> W10 <input type="checkbox"/> W11 <input type="checkbox"/> W12

You may register online at www.afcc-ca.org or return completed form and payment to:

AFCC-CA

1336 N. Moorpark Road, #185, Thousand Oaks, CA 91360

Email: afccsca08@aol.com

Make checks payable to AFCC-CA

PAYMENT INFORMATION

☐ Payment enclosed (U.S. currency only please)

☐ Please charge my credit card ☐ Visa ☐ MasterCard

Sorry, we do not accept American Express, Diners Club or Discover

Card Number _____

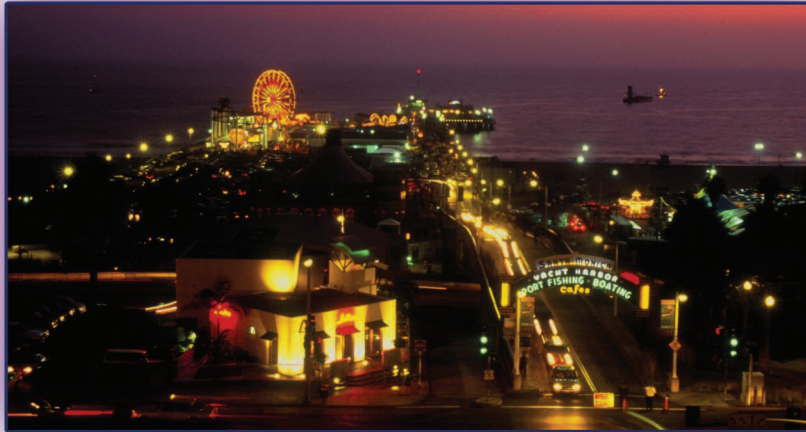
Expiration Date ____ / ____

Card Holder's Signature _____

30 day Cancellation Policy: Written notice of cancellation received by fax/email or postmarked by January 10, 2008 will be issued a credit for the next AFCC-CA Conference. No credits will be issued for cancellations received after January 10, 2008. No exceptions will be made.



The California Chapter of the
Association of Family and Conciliation Courts



AFCC-CA Annual Conference

February 8-10, 2008

Co-Sponsored by Los Angeles County Superior Court

The Rosetta Stone of Child Custody:
The Bar, the Bench, and Mental Health Experts Decoding
Each Other's Philosophy and Practice

The Sheraton Delfina
Santa Monica, CA

AFCC-CA

1336 N. Moorpark Road, #185
Thousand Oaks, CA 91360

Nonprofit Org. U.S. Postage PAID Madison, WI Permit No. 1
